

the **theatron**<sup>™</sup> server



To add films or music to your **theatron**<sup>™</sup> Server, simply place your disk in the drive, and your media will be stored without the need to press any buttons at all! Once the disk is done, it will simply be ejected, and your **theatron**<sup>™</sup> Server will have the content ready for you, whenever you need it...  
Simple enough for the whole family to do!

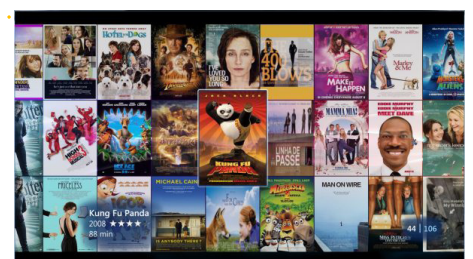
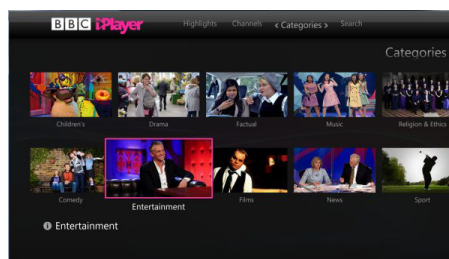
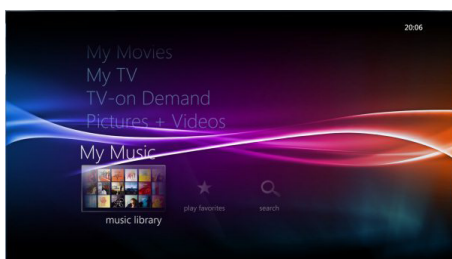


The **theatron**<sup>™</sup> Server has full RAID capabilities, as well as a second method of redundancy. With these precautions in place, you can feel confident that all your media is safe and secure.

With up to 24TBs of storage...

- ✿ That's over 1,000 BluRays,
- ✿ Over 3,000 DVDs...
- ✿ ...or over 34,000 CDs!

To view all your stored content, and access services such as TV-on-demand, you will need to decide how many people will want to watch different things simultaneously, then buy that many **theatron**<sup>™</sup> View units...  
The images below show how you can browse your media on your **theatron**<sup>™</sup> View.



## Control

The **theatron**<sup>™</sup> Server is designed to run “headless”, which means you don't need to control it directly. Instead you access its files and features via a laptop or PC over the home network. It also communicates with your **theatron**<sup>™</sup> View units in this way.

## Back-ups & peace-of-mind

The **theatron**<sup>™</sup> Server not only backs-up its own data, it also backs up the **theatron**<sup>™</sup> View boxes, and it can back up your laptops & PCs too! This means that you can feel reassured that your data is safe, wherever it is stored.

## Serving your system



Do you use another brand of media player such as the ones above?

If so, your **theatron**<sup>™</sup> Server can store all your files, ready for your media player to use...



## Storage

Basic: 2TB (2000GB)

Maximum: 36TB

Duplication: Optional up to 18TB

## Size & Weight

Height: 132 mm (5.2")

Width: 430 mm (16.9")

Depth: 660 mm (26")

Weight: approx. 20 kg (44 lbs)

## Contact

Please contact [info@theatronmedia.co.uk](mailto:info@theatronmedia.co.uk) for more information, we look forward to helping you find your perfect solution.

## Extra AV Output Support

Maximum 8 Theatron Views (any versions)

## Audio & Video

\*not required for standard use\*

## Network

Wired: Gigabit (10/100/1000)

## Power

110 - 240VAC

(Max. power usage: 800W)